

## MARAC

### What is a MARAC?

MARAC is a multi-agency risk assessment conference that is held daily to review the most high risk DV cases.

Referrals to MARAC should be made by completing the Safe Lives DASH; the threshold for MARAC is 14 ticks or evidenced professional judgement.

The form can be downloaded from our website under the 'Professionals' section:

<http://www.cambsdasv.org.uk/>

Although preferable, consent is not needed for referral to MARAC. Referrals can be made to the MARAC Coordinator via:

[idvareferrals@cambs.pnn.police.uk](mailto:idvareferrals@cambs.pnn.police.uk)

### Useful numbers:

Duty IDVA (professional only): **01480 847718**

Cambridgeshire MARAC: **01480 847717**

Cambridge Women's Aid Outreach: (Cambridge, South & East Cambs): **01223 361214**

Refuge Outreach (Fenland, Hunts and Peterborough): **07787 255821**

Cambridge Rape Crisis:

**01223 245888** (helpline)

**01223 313551** (office)

Peterborough Rape Crisis: **01733 852578**

Elms SARC: **0845 089 6262**

Cambridgeshire Adults Social Care:  
**0345 045 5202**

Cambridgeshire Children's Social Care:  
**0345 045 5203**

NSPCC: **0808 800 5000**

Cambridgeshire Police: **101** (non-emergency)

National Domestic Violence:  
(helpline) **0808 2000 247**

Mental Health Crisis Support: **111**

Karma Nirvana: **0800 5999 247**

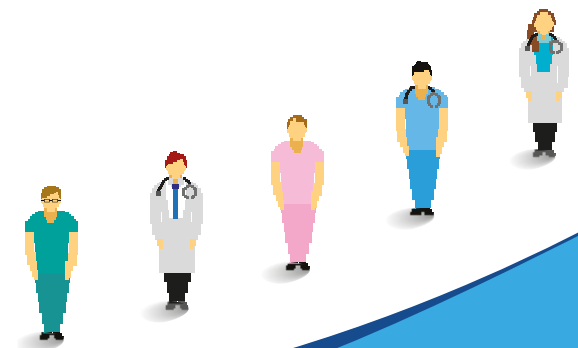
Men's Advice Line: **0808 801 0327**

Galop (LGBTQ): **0800 999 5428**



**Cambridgeshire  
& Peterborough**  
Domestic Abuse & Sexual  
Violence Partnership

**Information for  
professionals**



The Health IDVA works with hospital based services and Midwifery across Cambridgeshire.

To provide information and advice to people in domestic abusive relationships to help them to make decisions.

To identify and assess risks and talk through options to assist with safety planning for clients and their children in order to reduce risk.

To regularly review risks and devise together bespoke safety and support plans.

To provide information on issues such as legal advice and housing, among other options.

To provide emotional support.

### Who is appropriate to be referred?

The Health IDVA will accept referrals at all risk levels.

Other support offered:

- Advice and information to professionals who may be concerned about someone experiencing domestic abuse.
- Professional consultation where there is a concern but no consent to refer.

### To contact the Health IDVA:

Please contact the Health IDVA on:

mobile **07827 880327**

office **01480 847718**

or email **[idvacamb@nhs.net](mailto:idvacamb@nhs.net)**

### What is domestic abuse?

Any incident or pattern of incidents of controlling, coercive or threatening behaviour, violence or abuse between those aged 16 or over who are or have been intimate partners or immediate family members regardless of gender or sexuality.

This can encompass but is not limited to the following types of abuse:

- Psychological
- Physical
- Sexual
- Financial
- Emotional

Anyone can experience domestic abuse regardless of age, gender, race, ethnic or religious group, class, sexuality, disability or lifestyle.

