

**Cambridgeshire and Peterborough
Domestic Abuse and Sexual
Violence Partnership
Annual Report
2017-18**



**Cambridgeshire
& Peterborough**
Domestic Abuse & Sexual
Violence Partnership

Contents

1.0	Our Structure.....	4
2.0	Our Aims.....	4
3.0	Domestic Abuse & Sexual Violence Offer.....	5
4.0	Prevent.....	5
5.0	Protect.....	8
6.0	Pursue.....	22
7.0	Prepare.....	24
8.0	Priorities for 2017-18.....	26

Introduction from the Chair

Dear Partners

I am pleased to introduce to you the Cambridgeshire Domestic Abuse and Sexual Violence Partnership Annual Report for 2017 / 18.

The last year has been exceptionally busy with not only the 'business as usual' to keep up with but also several new projects. We were really pleased to have our grant bid to the DCLG approved for a one-off award of £700,000 to improve accommodation related support to victims and survivors across Cambridgeshire and Peterborough and a range of projects have been successfully implemented across the County. We were also involved in the successful bid that the Office of the Police & Crime Commissioner made to the national VAWG fund which resulted in £472,000 to provide therapeutic interventions to victims and children across the county.

Our joint working with Peterborough has developed over the past year and we are now able to provide a truly countywide response to domestic abuse and sexual violence.

The countywide VAWG Action Plan has taken shape, led by the DASV Operational Group, and a number of actions have been completed. The DASV Delivery Group has maintained oversight of all activities and it's been great to have increased involvement and support from all our partner agencies.

The next twelve months will be a period of challenge as we endeavour to maintain services that received one-off funding but we would like to thank you in advance for all your support and hard work in the area of domestic abuse and sexual violence.

Martin Brunning

Chair, Cambridgeshire & Peterborough Domestic Abuse and Sexual Violence Partnership

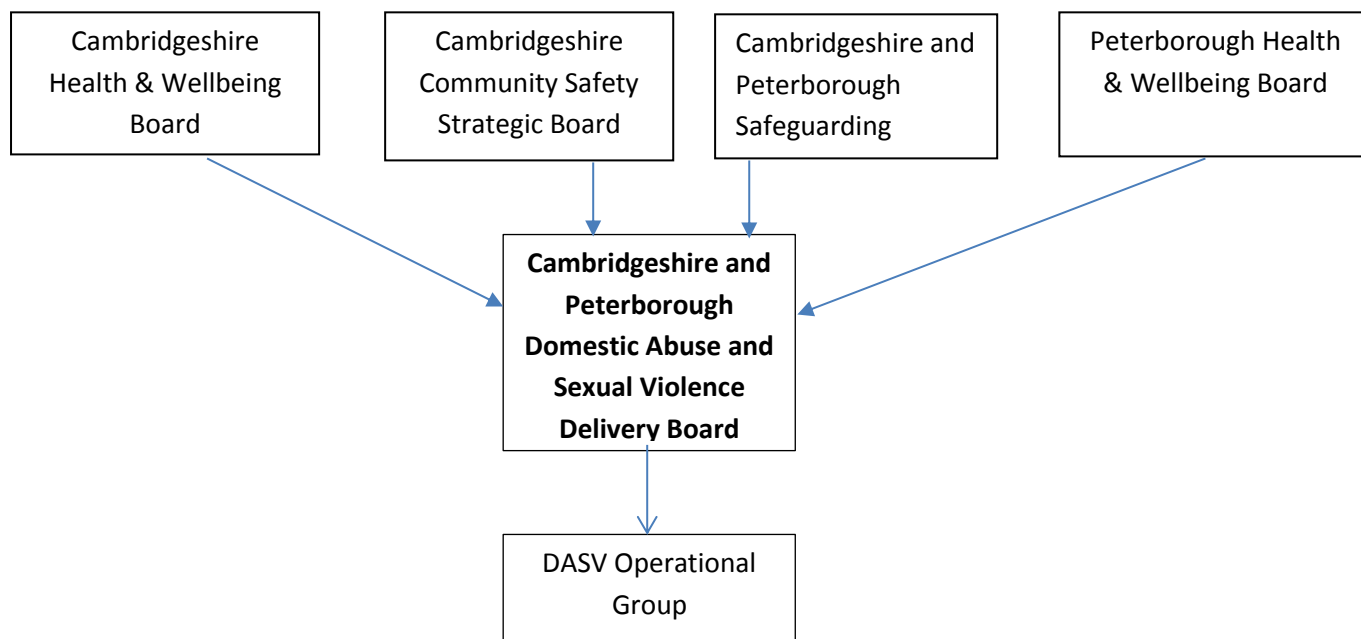
Key information from Cambridgeshire and Peterborough Domestic Abuse and Sexual Violence Partnership Annual Report 2017-18

Key Headlines –Cambridgeshire and Peterborough

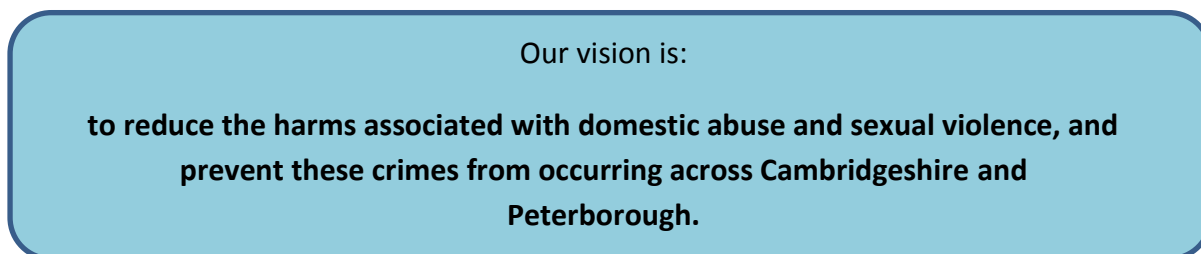
- ❖ There were 1824 referrals to the Independent Domestic Violence Advisory Services for domestic abuse, a decrease on the previous year due to changes in referral thresholds for Peterborough
- ❖ A total of 1636 cases were heard at MARAC - Multi-Agency Risk Assessment Conferences (increase of nearly 50%)
- ❖ A total of 13,237 domestic abuse incidents were reported to Cambridgeshire Constabulary. This was a slight decrease on the previous year but there was a 10% increase in crime rate
- ❖ Refuges across the county housed 113 women and 145 children
- ❖ 1317 people were referred to domestic abuse outreach services, over double the number for the previous year
- ❖ The ISVA and ChISVA Service had 569 new referrals, over three times as many as the previous year
- ❖ The Adult Safeguarding Teams received 826 referrals that involved a domestic abuse element and 281 with a sexual violence element.
- ❖ Children's Social Care received 958 referrals where Domestic Abuse was a factor, an increase of over 50% from the previous year

1.0 Our structure

Since 2016 the Domestic Abuse and Sexual Violence Partnership has covered both Cambridgeshire and Peterborough. At a strategic level, work is overseen by the Domestic Abuse and Sexual Violence Delivery Board who ensure the Cambridgeshire and Peterborough Violence Against Women and Girls Strategy, and associated Action Plan are delivered by the Domestic Abuse and Sexual Violence Operational Group.



2.0 Our Aims



In November 2017 the Partnership published the Cambridgeshire and Peterborough Violence Against Women & Girls (VAWG) Strategy. The Strategy is based on Home Office expectations for VAWG services and identifies three priorities for the county:

Priority 1: We will make sure that people that have experienced VAWG can get help in their community from an Outreach Service. Our Partners will work together to make sure that people can get the support they need in a way that suits them.

Priority 2: We will set up a Domestic Abuse Unit. All our partner organisations will be involved in this so that people don't have to go to lots of different places to get help. The Domestic Abuse Unit will offer support to all victims of VAWG that live in Cambridgeshire or Peterborough.

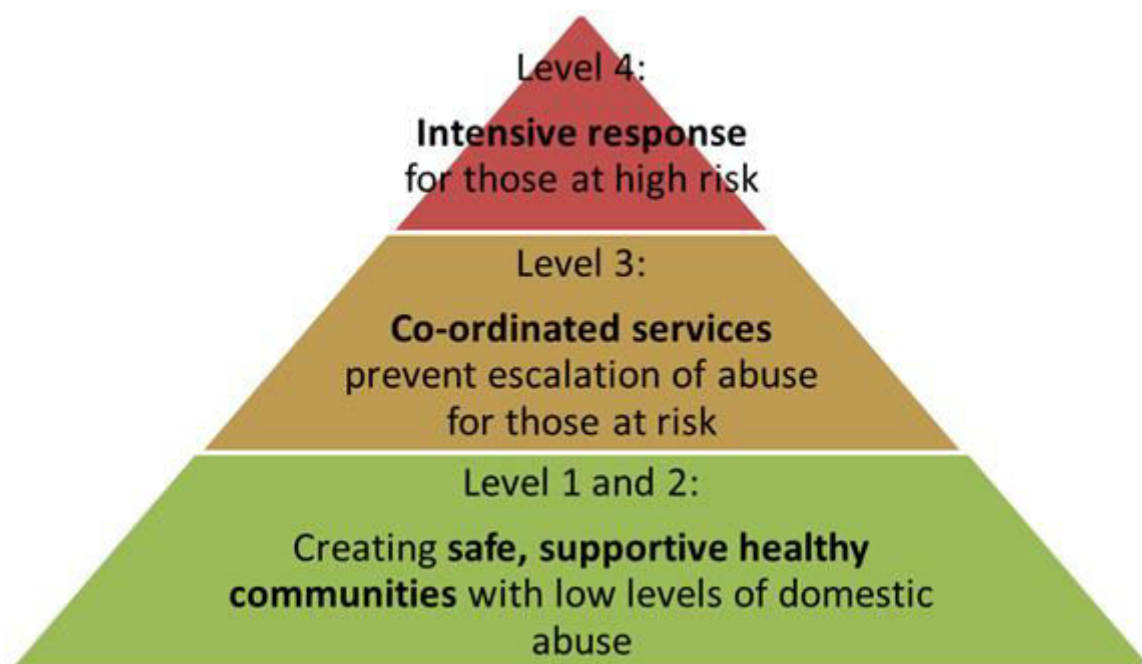
Priority 3: We will make sure that everyone can get the support they need. Some people find it more difficult to get help – for example due to disability or language barriers. We will make sure that people can get help whatever their needs are.

The VAWG Strategy is accompanied by an Action Plan that sets out in detail what we will do to achieve the three priorities above. The Action Plan is divided into four sections:

- Prevent
- Protect
- Pursue
- Prepare

3.0 Domestic Abuse and Sexual Violence Offer

The Domestic Abuse and Sexual Violence 'Offer' is based on the Model of Staged Intervention, setting out services at four levels: the model is a key part of a wider integrated model of support services for victims of crime commissioned by the Police and Crime Commissioner for Cambridgeshire and Peterborough.



4.0 Prevent

- Preventative work with children and young people in schools and other settings
- Education and awareness for communities
- Young people at risk of using violence
- Supporting children and young people to recover

During 2017-18 the DASV Partnership delivered the following activities:

4.1 Preventative work with children and young people in schools and other settings

Community Safety Partnerships commissioned plays from social enterprise theatre company Alter Ego to raise awareness of healthy relationship issues in schools. This approach has been in place for the last four years. Tough Love, a 30 minute drama about unhealthy teenage relationships, was chosen, following evaluation of Chelsea's Choice in 2016, when young people expressed an interest

in learning more about healthy and unhealthy relationships. Tough Love toured Huntingdonshire; South Cambridgeshire and East Cambridgeshire in spring 2017 (Fenland and Cambridge City Community Safety Partnerships funded Chelsea's Choice).

The 2017 tour comprised 45 performances and was seen by approximately 5 800 young people and 330 adults. The project was funded by grants from Community Safety Partnerships and financial contributions from educational settings and delivery of the project was supported by Area Partnership members.

Recall of the play after 3 months was high. Young people recalled the story; key themes and messages and identified 3 key messages they would take forward:

- Talk to someone if you are uncomfortable with a situation or relationship - it is never too late to get out
- Know the early signs of an unhealthy relationship and seek help and/or get out
- Get to know and to trust potential partners before you have a relationship with them

Representatives from local organisations that young people could talk to participated in post-show discussions at 22 performances. This encouraged young people to seek help but it has been identified that delivery needs to be adapted in future to suit specific needs of SEND audiences.

The directory of help and support that accompanied the show was shared widely and requested by organisations who were not hosting a performance.

YMCA work within further education colleges running the Expect Respect programme and have worked with 400 young people in the last year. This work is continuing until May 2020 across the County.

4.2 Education and Awareness for Communities

A joint Public Protection Communications Group runs across Cambridgeshire and Peterborough to ensure consistency across all partner agencies in messages to the public around safeguarding issues. The group is led by the Police and includes members from all key agencies including the DASV Partnership.

The Cambridgeshire and Peterborough DASV Partnership has delivered a number of communications and awareness actions with professionals and communities including:

- A suite of 7 new posters featuring images of a variety of people (ie older people, male victims, disability, LGBT). The posters were distributed to community centres, libraries, GP surgeries, pharmacies, hospitals and children's centres and were emailed to schools.
- A poster to highlight awareness of domestic abuse harms during pregnancy was created with colleagues at Addenbrooke's Hospital and shared with maternity units in the county.
- Two short films were created explaining how to contact specialist outreach support and how the Independent Domestic Advisory Service works. The films are available on YouTube in English, Urdu, Punjabi, Russian, Lithuanian, Polish and in British Sign Language.
- Links with Health colleagues enabled us to attend GP Awareness events to distribute posters and information and put articles in the GP Newsletter

- Ongoing work with the provider of the Cambridge United Football Club website to have a banner on the website highlighting male victims and links between sport and domestic abuse, where users can click through to our website for more information and support
- Developed a Professionals Leaflet detailing how to ask about domestic abuse, effects on victims and children, and local support services. This was distributed to GPs, Adult and Children's Social Care and all partner organisations.

4.3 Young People at risk of using violence

The Youth Offending Service have been instrumental and taken the lead in the delivery of the Break 4 Change programme in Cambridgeshire and Peterborough. This is a group programme to work with young people and their parents / carers where there have been issues of Child / Adolescent to Parent Violence (APV). The initial pilot 10 week programme was very successfully delivered and longer term delivery of 2 programmes per year is being arranged, partly through funding from the VAWG programme. Several YOS clients have attended this group as APV is a very significant issue with the service. The YMCA Trinity Group has worked with Break4change for a bespoke B4c 'holding programme' to be written specifically for Cambridgeshire to support the work which is being led by YOS. This was done to bring added value to the County in addressing APV. This can be used as a step up, step down approach or standalone intervention and will be running 3 programmes a year.

Interventions with young people in YOS around issues of DA are linked to court orders or pre-court disposals, with all YOS officers, prevention workers, police officers and specialist workers delivering the work in a sensitive and appropriately assertive manner. Much of this work is done with two workers and always with the overview of management support. Additional support is provided through the risk management process, which is set up for young people where the risks to themselves or to others are at a medium level or above. This process includes setting up multi-agency risk meetings, safety plans and integrated intervention plans to ensure that the young person and others are as safe as possible and that the work is delivered in a co-ordinated way.

4.4 Supporting children and young people to recover

Cambridgeshire was one of a small number of areas to receive an award from the VAWG Transformation Fund. A partnership bid, led by the Office of the Police and Crime Commissioner, was successful in securing £400k for the county over three years, to enable young victims of domestic abuse/sexual violence (aged 13-19, or 24 where there are additional needs) to access specialist, community-based services providing one to one, and group, trauma-based therapeutic/counselling services, to improve their mental health and prevent further escalation of risk and need. Innovatively this service is also be accessible to young people who use violence and abuse as a result of being themselves traumatised or victims of other types of abuse. The OPCC was able to secure a further £72k in early 2018. This enabled the counselling waiting list for young victims of sexual violence held by the Cambridge and Peterborough Rape Crisis Partnership to be cleared overnight. Embrace – Child Victims of Crime were also able to accelerate the development of group work for young people demonstrating risky behaviours as a result of their experiences. The project is a partnership between Embrace – Child Victims of Crime, the Cambridge and Peterborough Rape Crisis Partnership, the county's Youth Offending Services and the Victim and Witness Hub. It is based primarily within the county's Sexual Assault Referral Centre.

Links have been made with other providers of support in the county to help children and young people recover from abuse such as NSPCC and Barnardo's and representatives from these organisations attend the DASV Operational Group.

4.5 Our priorities for 2018-19

- Developing the DASV Champions network across the county with representatives from all partner agencies and quarterly network workshops
- Continue the Break for Change programme
- Support and promote Embrace – Child Victims of Crime group work for young people demonstrating risky behaviours
- Continue with our campaigns and awareness raising campaigns across the community, linking with the White Ribbon campaign
- Develop a countywide approach to implementing recommendations from Domestic Homicide Reviews

5.0 **Protect**

- Independent advocacy, advice and safety planning provided to victims at risk by the Independent Domestic Violence Advisory Service (IDVAS)
- Daily and weekly MARACs to support high risk victims through multi-agency information sharing, risk assessment and safety planning
- Refuge accommodation commissioned by Cambridgeshire County Council and Peterborough City Council to provide refuge for those fleeing severe domestic violence
- Advocacy, advice and safety planning provided by the specialist outreach services for victims at risk
- Independent advocacy, advice and safety planning provided to victims at risk by the Independent Sexual Violence Advocacy Service (ISVAS) and Cambridge and Peterborough Rape Crisis Partnership
- Clinical and holistic support services at the countywide Sexual Assault and Referral Centre (SARC)

5.1 IDVA Service

- 5.1.1 Cambridgeshire County Council employs 18.3 FTE Independent Domestic Abuse Advisors (IDVAs), an IDVA Manager and 1.5 MARAC Coordinators, all based at the Multi-Agency Safeguarding Hub (MASH) in Godmanchester. From 1st April 2017, the IDVAs previously employed by Peterborough Women's Aid were TUPE'd to Peterborough City Council and are managed by the Cambridgeshire Operational IDVA Manager to provide a countywide IDVA Service. The Peterborough IDVAs are now co-located with staff in the Victim and Witness Hub and this model allows closer partnership working and seamless service provision for victims. The IDVA Service works with victims who are assessed as being at high risk of harm utilising the sector wide 'DASH (Domestic Abuse, Stalking and Honour-Based Violence) Risk Assessment Checklist.

The IDVA Service also have three specialist client based specialist posts covering Cambridgeshire only. The following 3 IDVA posts work with victims of all risk levels:

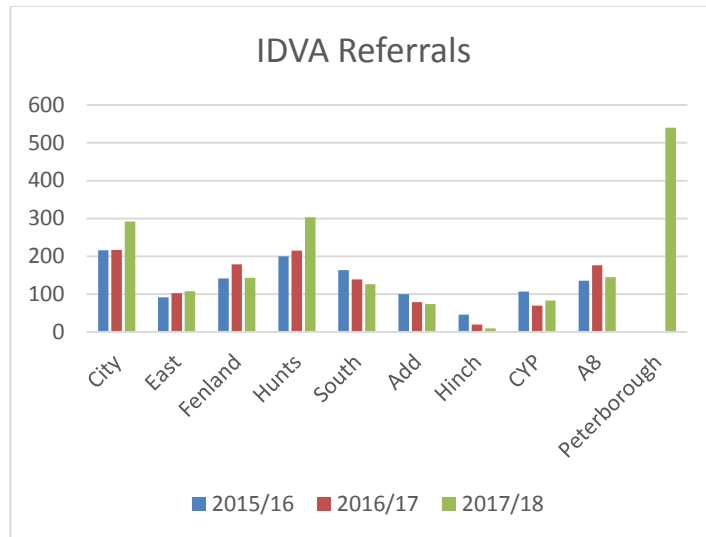
- Young People's IDVA – works with young people aged 13-19 (24 with additional needs) that are experiencing abuse in their own intimate relationships and at all risk levels

- A8 IDVA – works with victims from Eastern European ‘A8’ countries at all risk levels
- Health IDVA – works with victims referred by all hospital and Midwifery Services at Addenbrooke’s and Hinchingsbrooke Hospitals, at all risk levels

IDVAs also provide a range of support to partner agencies such as delivering training, advice via a daily Duty IDVA service and attendance at team meetings. Four of the IDVA team are now qualified ISVAs (Independent Sexual Violence Advisers) as well.

5.1.2 Number of referrals to Cambridgeshire & Peterborough IDVA Service

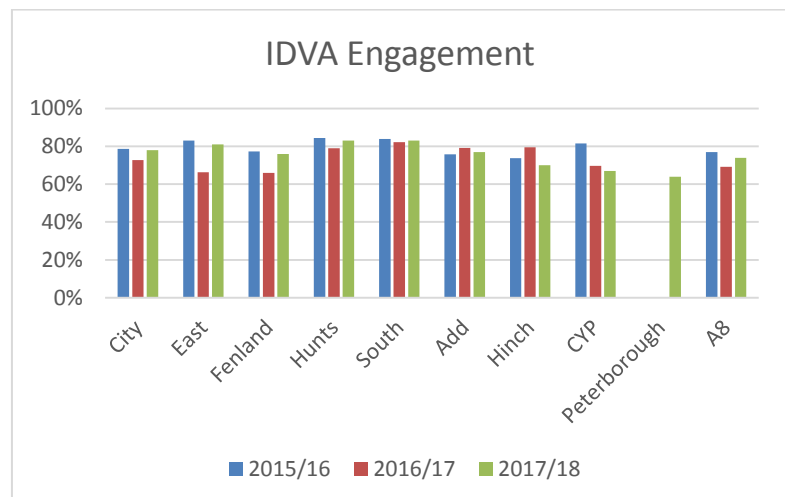
	2015/16	2016/17	2017/18
City	216	217	292
East	92	103	108
Fenland	142	179	143
Hunts	200	215	303
South	164	139	126
Add	100	79	74
Hinch	46	20	10
CYP	107	70	83
A8	136	176	145
Pboro			540
Total	1203	1198	1824



5.1.3 Engagement rate

The Engagement rate is the percentage of referrals that engage with the IDVA Service. Engagement is on a voluntary basis. Although all efforts are made to engage clients, in some cases it is not possible to safely contact the client or they may not wish to engage. The overall engagement rates for 2017-18 were 79% for Cambridgeshire and 65% for Peterborough (target of 75%). From April 2018 the database system that the IDVAs use has been combined for Cambridgeshire and Peterborough so future reports will enable calculation of an average engagement rate for the county.

	2015/16	2016/17	2017/18
City	79%	73%	78%
East	83%	66%	81%
Fenland	77%	66%	76%
Hunts	85%	79%	83%
South	84%	82%	83%
Add	76%	79%	77%
Hinch	74%	80%	70%
CYP	82%	70%	67%
Pboro			64%
A8	77%	69%	74%

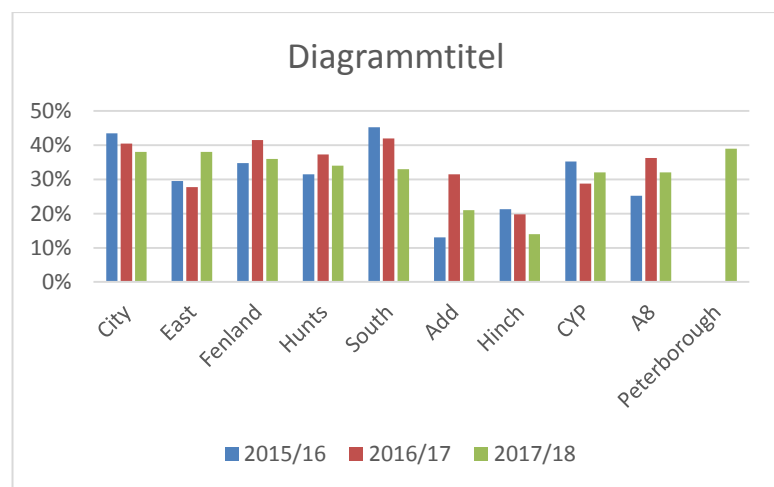


5.1.4 Repeat Rate – Cambridgeshire IDVA Service

The repeat rate refers to cases re-referred to the IDVA Service within twelve months of the last referral. The overall repeat rates for 2017-18 were 35% for Cambridgeshire and 44% for Peterborough. From April 2018 the database system that the IDVAs use has been combined for Cambridgeshire and Peterborough, so future reports will have one average repeat rate for the county.

Repeat referrals are not always a 'negative' thing; these can be viewed in a positive way, when the client is engaging with the IDVA Service and is reporting further repeat incidents to the Police in accordance with their agreed safety plan. Repeat referrals are measured on the case management system. This has historically been recorded by Cambridgeshire for a number of years. However, this recording tool is new to Peterborough. Again future records will provide an accurate reflection of this data collection in relation to positive and negative repeat incidents

	2015/16	2016/17	2017/18
City	44%	41%	38%
East	30%	28%	38%
Fenland	35%	42%	36%
Hunts	32%	37%	34%
South	45%	42%	33%
Add	13%	32%	21%
Hinch	21%	20%	14%
CYP	35%	29%	32%
A8	25%	36%	32%
Pboro			39%



5.2 MARAC data

Current threshold for MARAC referrals countywide are:

- 14 or more on the DASH Risk Assessment
- Referrals made on evidenced professional judgement.
- Repeat incidents of violence, sexual violence and harassment, within 12 months with the same victim and perpetrator.
- Referrals brought to MARAC on escalation- 3 or more incidents attended by Police within the last 12 months.

Cambridgeshire and Peterborough MARAC meetings take place daily, excluding bank holidays. Complex cases heard at Daily MARAC that require further investigation and more intrusive safety planning are escalated to a monthly MARAC Plus meeting.

Such cases that require a more immediate response are managed by way of a Professionals Meeting arranged and convened by the primary safeguarding lead for the DV victim within a specified time frame at the Daily MARAC meeting.

The countywide service also provides support to MARAC victims that have suffered sexual violence as a primary abuse category.

Actions from MARAC are allocated to partner services via the MODUS database system.

From 1st April 2018, the Cambridgeshire and Peterborough MARAC processes merged into one Daily MARAC covering the whole county and one monthly MARAC Plus.

The total number of MARAC cases heard at Daily MARAC in 2017-18 was 1636. This is an increase of nearly 50% from the previous year. The number of cases heard at MARAC Plus in 2017-18 was 9.

5.3 Women's Refuges

The four women's refuges in Cambridgeshire housed a total of 113 women and 145 children during 2017-18.

5.3.1 Cambridge Women's Aid 2017/18

Cambridge Women's Aid has been providing specialist services to survivors of domestic abuse in Cambridge and the surrounding areas for over forty years. Currently, CWA does this through the provision of refuge for eleven women and their children, and by offering tailored specialist support to survivors living in Cambridge City, South Cambridgeshire and East Cambridgeshire.

CWA offers a high standard of modern refuge accommodation to women and children. In 2017-18, CWA accommodated 46 women and 60 children in refuge. The refuge service focused on the safety of each family and worked with them to reduce their risk of harm while supporting them to recover from their experiences. In addition to in house individual support, staff also provided various groups and activities to build women and children's confidence and support their independence. CWA continue to support women and children who leave the refuge through resettlement support for as long as necessary.

CWA provide an emergency out of hours service 24 hours a day, 365 days a year to ensure that refuge and outreach service users could access advice and support in a crisis.

Added value

CWA service users benefited significantly from financial and in kind donations that enabled them to add the following to their core services

- Collection storage and distribution of furniture and household items to service users in need
- Collection and distribution of food, toiletries, toys etc to service users in need
- Huge response from communities to the CWA website request for support of specific donations and their Amazon wish list
- Support from local philanthropic groups to provide families using the refuge with nightwear, slippers and starter packs of cleaning items for those they resettle
- New beds and other furniture for children moving on from refuge into their new homes
- Specialist art therapy and play therapy to children moving on from refuge
- A weekly support group for girls transitioning from the refuge to living in the community
- Funds to meet the needs of service users as we find them and to remove barriers to living safely

In addition they also provided

- Direct support to local professionals to find and access refuge space quickly as well as offering specialist advice and support
- Expertise to give training and awareness of domestic abuse to
 - 50 university students staffing the Linkline
 - 60 Youth Offending Team staff
 - 40 Law Students volunteering in the Anglia Ruskin University Law Clinic
 - 20 Homelink volunteers
 - 20 YMCA workers involved in their Respect programme
 - 6 medical students
 - 65 Cambridgeshire County Council employees
 - 65 police officers and trainee police officers (full day Domestic Abuse Matters training)
 - 40 church or WI members
- Worker time to support partnership working. CWA contributed to
 - Cambridgeshire and Peterborough Domestic Abuse and Sexual Violence Partnership meetings
 - The Cambridge City Domestic Violence Forum
 - The Crown Prosecution Service Violence Against Women and Girls Scrutiny Panel for the East of England
 - Cambridge City Council Homelessness Strategy Implementation Partnership
 - Women's Aid Federation of England regional network and national housing group

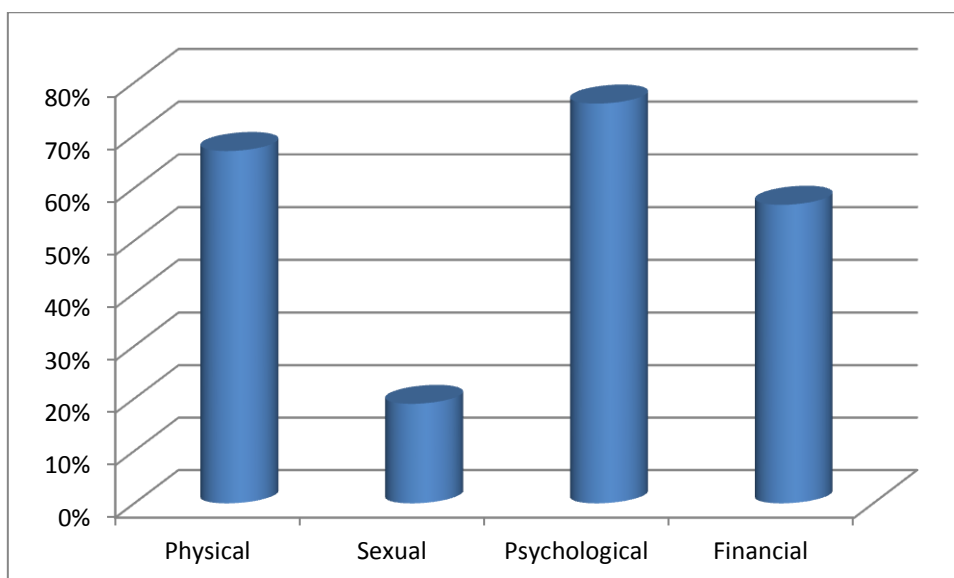
In 2017/18 CWA were proud to be awarded the Women's Aid National Quality Standard in recognition of the unique quality of their dedicated specialist provision for women and children survivors of domestic abuse.

5.3.2 Refuge

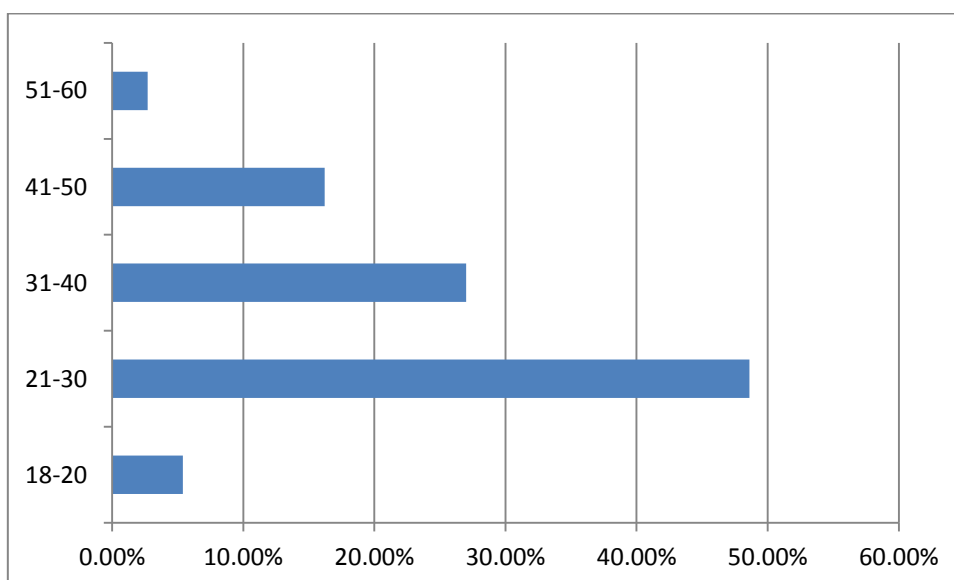
Refuge runs two specialist safe houses for women and children escaping domestic violence in Cambridgeshire. The refuges are staffed by fully trained and experienced practitioners. Refuge's practitioners receive a comprehensive programme of specialist training to enable them to deliver support that meets the diverse needs of victims of domestic violence.

From 01 April 2017 to 31 March 2018 Refuge-Cambridgeshire received 108 referrals and supported 37 women and 51 children escaping domestic violence. The Cambridgeshire service has supported women experiencing all forms of domestic violence and women experiencing so-called honour based violence and forced marriage. 75% of clients were experiencing multiple forms of VAWG.

The chart below shows the abuse types experienced by women housed in the two Refuge refuges 2017-18



Out of the 37 clients supported during the year, 18 were in the age range of 21-30 years old



Over the last year there has been an increase in the number of women entering the Refuge with children

- 32.4% of women who accessed the Cambridgeshire service didn't have children
- 32% of the women had one child
- 44% had two children
- 25% had three or more children
- 11 % were pregnant

Of these children, 43% were known to social services, 11% had a safeguarding plan and 28% of 0-5 year olds were known to health services. This demonstrates the complex needs that many of the children supported have. It takes a great deal of expertise to help children move on from their experiences.

On departure 92% of clients leaving the service were assessed as being at reduced risk of domestic abuse.

At the point of leaving, of the clients who were asked:

- 90% reported an end to all physical abuse
- 62% reported an end to psychological abuse
- 89% reported an end to sexual abuse
- 88% reported an end to financial abuse
- 64% stated they felt much safer
- 44% stated their quality of life had improved a lot
- 30% felt very confident in knowing how to access support

5.3.3 Peterborough Women's Aid

Peterborough Women's Aid have an 8 bedroom refuge, and all of the residents who stay with them are from out of area. They take self referrals from many different agencies. In 2017-18 the refuge housed a total of 31 women and 23 children. They also took referrals for Outreach support for the Peterborough area until Refuge had their Outreach service fully up and running. They took 180 phone calls regarding local women the majority of which were self-referrals.

Referral Source		Outcomes	
Self	121	Advice/ safety planning	69
Social Services	9	Offered to speak to client	2
Housing	5	signposted re legal advice	8
Police/probation	7	Wanting Freedom Programme	4
School	4	Signposted to Centre for DA	9
Nursery/family Centre	4	Advised to go to housing	3
Uni/college	1	Signposted to CAB	2
Mental Health Services	5	Advice re witness care	1
Private Counsellor	2	Looked for refuge	27
CAB	1	Referred to IDVA service	8
NSPCC	1	Referred to Police	1
Health Visitor	2	Referred to Outreach	46
Hospital	2	TOTAL	180
Aspire	4		
Community Worker	2		
Family Mediation	1		
Another refuge	1		
Solicitor	1		
Dr/health	6		
Hope in Action	1		
TOTAL	180		

5.4 Outreach Service

5.4.1 Cambridge Women's Aid

This service offers a free and confidential service based in the community to support those affected by domestic abuse, either directly or by supporting those who know them or work with them. CWA Outreach support covers Cambridge City, East Cambridgeshire and South Cambridgeshire. Calls from other areas are also taken, and signposted to Refuge (who cover the rest of the county) as appropriate.

The Outreach Project provided specialist support to 627 people from the following areas

Cambridge City		265
East Cambridgeshire		67
Fenland		6
Huntingdonshire		18
South Cambridgeshire		151
Out of county		76
Did not disclose/not recorded		44

They also offered brief advice to benefit a further 66 people, or their supporters, for whom they were unable to record information for.

They were also made aware of a further 289 people through the police who they were either unable to offer a service to or when it was offered, they did not engage.

CWA provided a highly valued needs led support service that could be accessed through their telephone helpline, one to one appointments with a specialist worker or through one of their many groups on offer.

During 2017-18, CWA provided groups in Ely and Cambridge City. All the groups offered activities, support with domestic abuse issues and an opportunity for women to come together to offer and receive peer support. The Outreach service provided 138 group sessions this year that had 698 attendances.

5.4.2 Refuge

Refuge Cambridgeshire Outreach Services have 4 Outreach Workers covering Fenland, Peterborough and Mid Cambs. They are supported by an Outreach Coordinator. The Service is becoming more established across the county, evidenced by an increased referral rate from partners, and agencies promoting the service.

In Fenland a support group has developed, with the delivery of the Wings Programme to clients in a group setting. The delivery of this Programme has been supported by the local Tesco. Delivery in other sites is expected to be developed soon with commitments from PE1 Child Centres and Outside Links to provide a location.

Outreach workers have engaged with the Domestic Violence Champions Network groups and other agencies to increase awareness of the Outreach Service. These include Barnardo's, The Richmond Fellowship, and Early Help Teams

For the period of April 2017 to March 2018 Outreach Services received 740 notifications of Domestic Abuse incidents. 560 were directly from the MASH with an average take up rate of 8.2%. When the client self-referred or an agency made contact this figure increases to 33%. In total 102 women, 92 children and 4 men engaged with the Service for long term support.

Clients leaving the Outreach Service reported that they

- Feel safer (47%)
- Feel not at all frightened (14%)
- Improved Quality of Life (80%)
- Feel confident accessing help (48%)

Refuge are still working in partnership with Cambridgeshire County Council so that women in their refuges can benefit from the support of a local mental health nurse. The nurse ensures that she sees every woman Refuge refers to her within a week – rather than the months she would have to wait if referred by a GP – and provides both direct support and signposting to other mental health services.

- Out of the 106 clients accessing long term support from the Outreach Service 28 identified as suffering with mental health issue as a consequences of Domestic Abuse evidencing the importance of this service.

Refuge provide outreach support in Fenland, Huntingdonshire and Peterborough. The outreach service was set up during 2017-18 and was fully staffed by July 2017. Outreach support was provided to 690 people during the year.

Fenland 167
Hunts 100
Peterborough 332
Other/Unknown 91

5.5 Cambridge and Peterborough Rape Crisis Group and ISVA Service

The Cambridge and Peterborough Rape Crisis Partnership (CAPRCP) comprises two independent dedicated specialist sexual violence organisations, Cambridge Rape Crisis Centre (CRCC) and Peterborough Rape Crisis Care Group (PRCCG). CAPRCP provide specialist sexual violence services to women, men and children who have experienced sexual violence and/or sexual abuse at any point in their lives. This includes but is not restricted to: rape, sexual assault, child sexual abuse, sexual harassment, rape within marriage/relationships, forced marriage, so-called honour-based violence, female genital mutilation, trafficking, child sexual exploitation, institutional sexual abuse and ritual abuse. They work across urban and rural settings within the county and with particularly vulnerable victims including survivors with learning disabilities and those with complex needs that other organisations cannot support.

All their services are free, equitable and based on need not risk. These include:

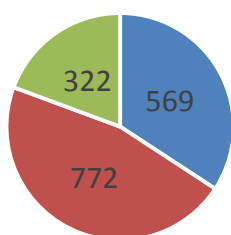
- Confidential Helpline
- Telephone Support
- Email Support

- Trauma Informed Counselling
- Face to Face Emotional Support
- Pre-Trial Support
- Independent Sexual Violence Advocates (ISVA)
- Peer Support Group Work

The charts below show the number of referrals to services in 2017-18. Referrals to the Adult and Children's ISVA Service have increased by 108% over the last two years.

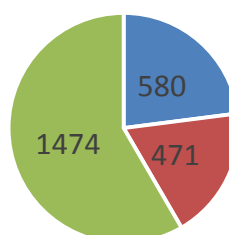
New Referrals

- ISVA/ChISVA
- Therapeutic Support
- Helpline callers

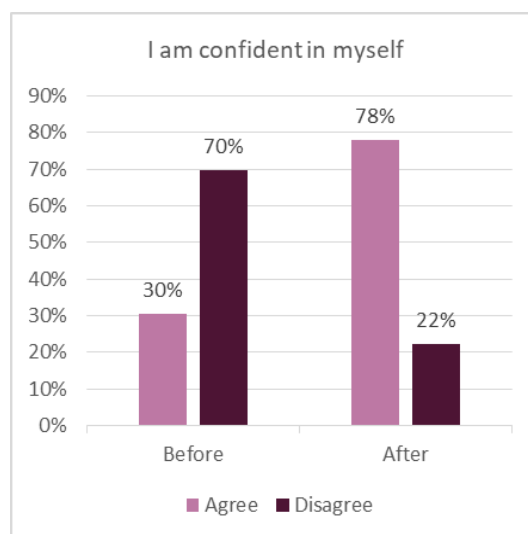
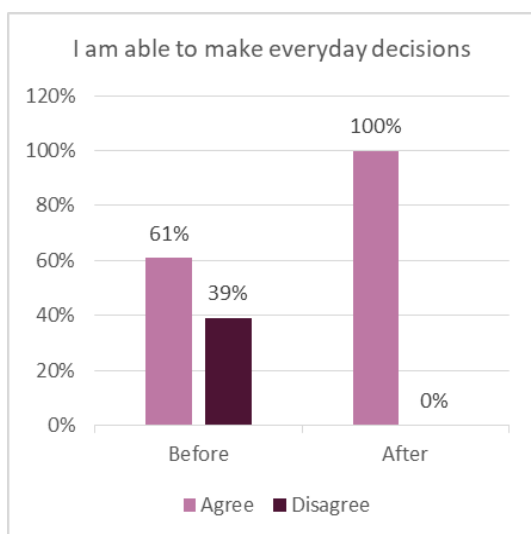


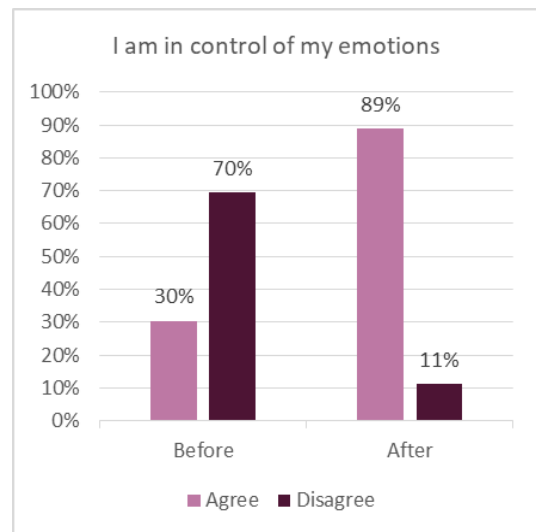
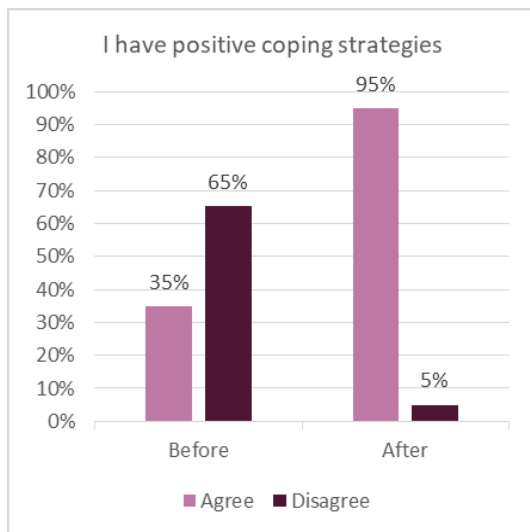
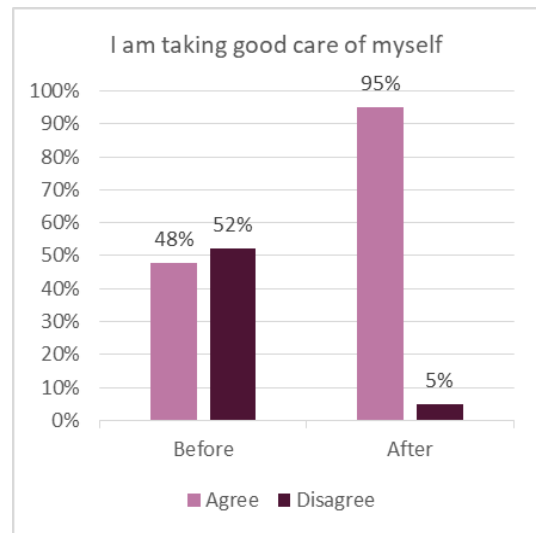
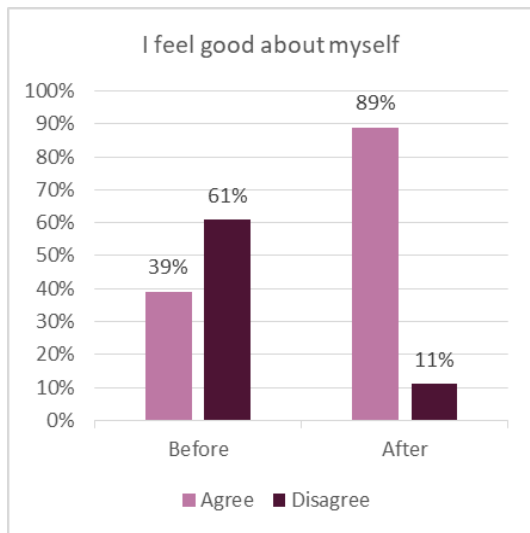
Support provided

- ISVA/ChISVA
- Therapeutic Support
- Helpline calls



Summary of 'before' and 'after' evaluation on CAPRCP therapeutic services:





5.6 Sexual Assault Referral Centre

The Elms Sexual Assault Referral Centre (SARC) is jointly commissioned by Cambridgeshire Constabulary and NHS England and supported by the Police and Crime Commissioner for Cambridgeshire and Peterborough. The SARC is based on the Hinchingsbrook Hospital site and run by Mountain Healthcare. The SARC offers free and practical support to anyone in Cambridgeshire and Peterborough who has experienced sexual violence and/or sexual abuse. The SARC offers confidential emotional support, referral to ISVA Service and counselling and also forensic examination. The SARC is also home to the Embrace Child Victims Of Crime service that offers support to young people that have experienced or witness domestic abuse or sexual violence.

During 2017-18 the SARC received 191 referrals for people over 18 and 102 for people under 18. For comparison, the referrals for 2016-17 were 129 and 81 respectively.

5.7 Supporting victims to remain safely in their own homes

In 2016, a partnership bid to the Department of Communities and Local Government was successful with Cambridgeshire receiving £700,000 for projects to enable victims of domestic abuse to be supported around accommodation. The funding was used for the following projects:

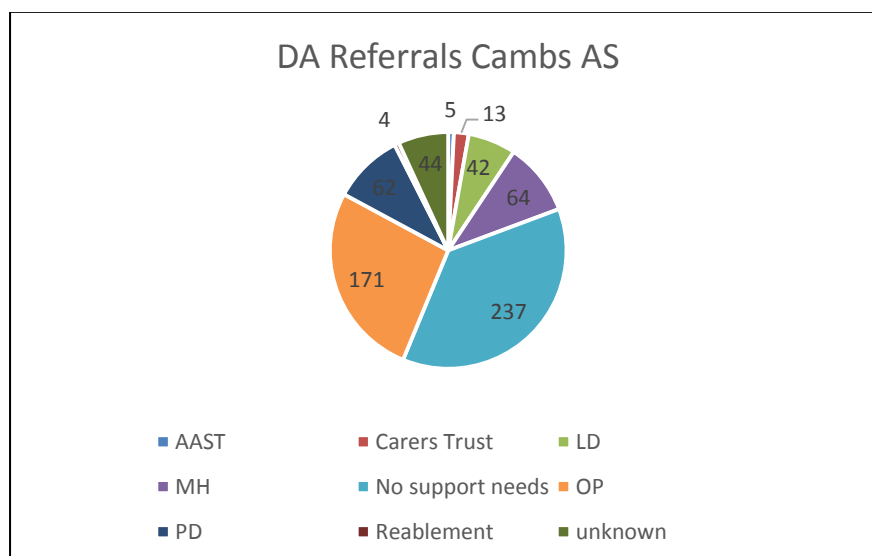
- Workshops and support for housing providers to sign up to the Domestic Abuse Housing Accreditation Scheme run in partnership with Standing Together and Peabody Trust.
- Outreach Service provision for Cambridgeshire and Peterborough to support victims that choose to remain in their own home (provided through Cambridge Women's Aid and Refuge)
- Funding to enable the Bobby Scheme to secure the homes of domestic abuse victims that choose to remain in their own homes.
- Funding Cambridgeshire and Peterborough Foundation Trust to purchase and implement the BARTA (Be Aware and Respond to Abuse) package from Against Violence and Abuse. This will improve knowledge and responses of professionals around domestic abuse across the trust.
- A range of communication and awareness resources, including awareness posters and films in alternative languages
- Support from mental health nurses in Refuge and Outreach provision.
- Counselling for victims of sexual violence via Cambridge Rape Crisis

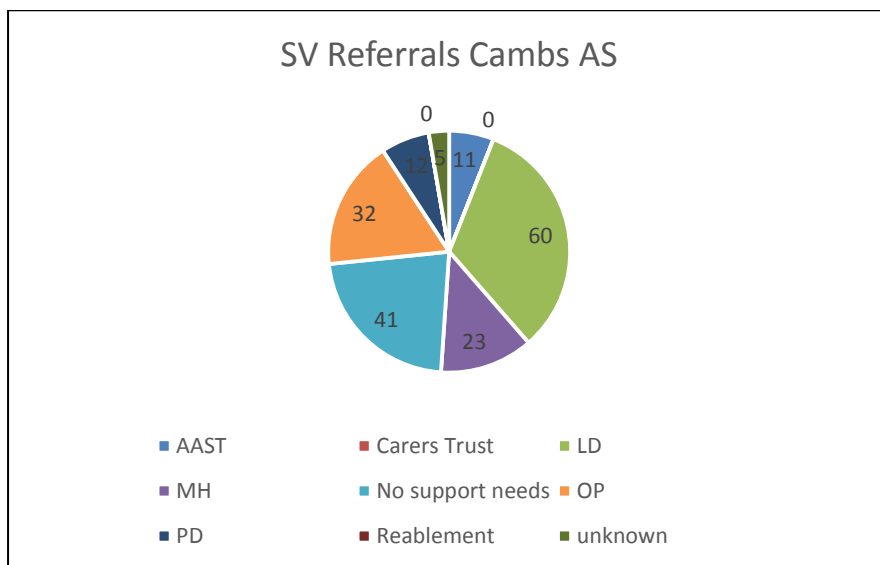
The projects funded are subject to an independent evaluation which is being undertaken during spring 2018.

5.8 Adult Safeguarding

The total number of Adult Safeguarding (AS) referrals to the Cambridgeshire MASH with a domestic abuse element in 2017-18 was 642. There were 183 referrals relating to sexual violence/assault. The total number of AS referrals to the Peterborough MASH with a domestic abuse element in 2017-18 was 184. There were 98 referrals relating to sexual violence/assault.

Cambridgeshire Adult Safeguarding Referrals

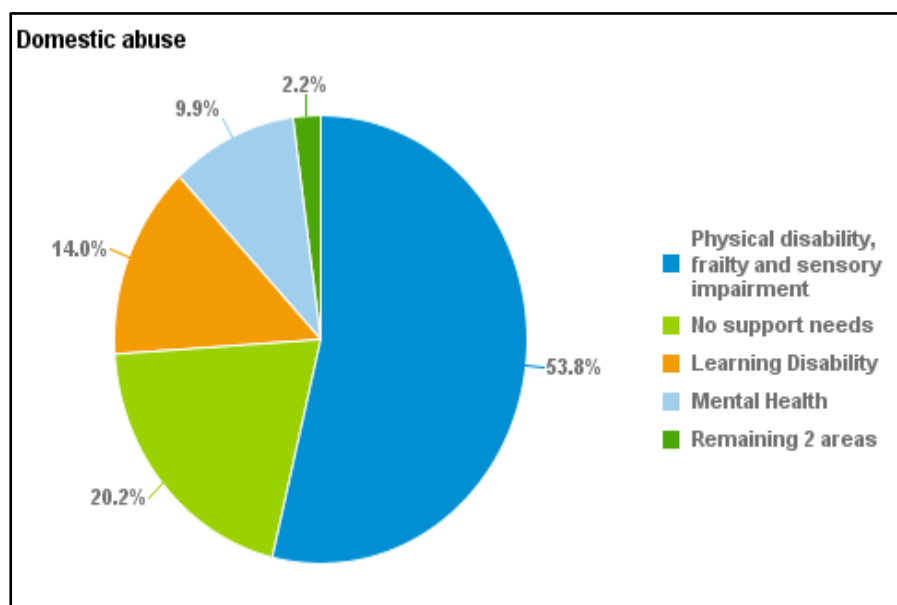


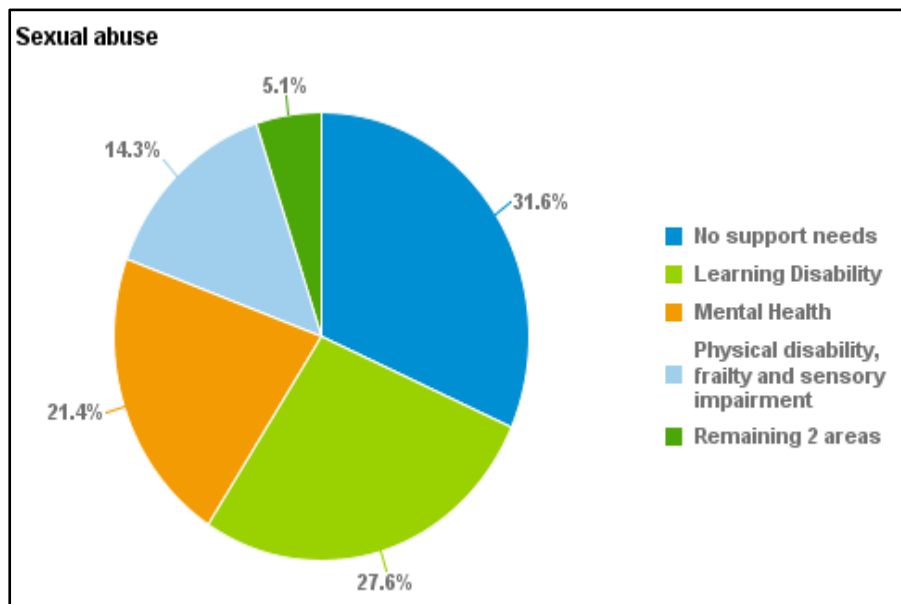


Domestic abuse	Actual	% split
safeguarding criteria met = No	453	70.60%
safeguarding criteria met = Yes	189	29.40%

Sexual abuse	Actual	% split
safeguarding criteria met = No	102	55.40%
safeguarding criteria met = Yes	82	44.60%

Peterborough Adult Safeguarding Referrals





Domestic abuse	Actual	% split
safeguarding criteria met = No	57	31.0%
safeguarding criteria met = Yes	127	69.0%

Sexual abuse	Actual	% split
safeguarding criteria met = No	26	26.5%
safeguarding criteria met = Yes	72	73.5%

Whilst the addition of domestic abuse as a category of abuse in the Care Act 2014 was welcomed, the eligibility criteria states that the victim must have care and support needs to be able to access the Adult Safeguarding process, thus excluding many victims who would previously have met the old 'vulnerable adult' criteria. The Safeguarding Adults Board have identified Domestic Abuse as a priority area of work and carried out an audit in December 2017 looking at domestic abuse cases involving Adults at Risk. A simultaneous audit was done by the IDVA Service looking at cases involving adults with vulnerabilities. The audit report is available from the Safeguarding Boards Business Unit and a number of learning points from the audit are being taken forward via a separate DASV/Adult Safeguarding/Adult Social Care action plan that will feed into the main VAWG Action Plan for the county.

In 2016, the national advocacy organisation Shaping Our Lives were successful in a funding bid for a project looking at domestic abuse support for women with disabilities. The DASV Partnership were asked to join the 'A Refuge for All' Project Board as the sole professional advisor, and the DASV Partnership Officer has undertaken this role. 'A Refuge for All' is piloting services solely for domestic abuse survivors with disabilities at two locations – London and Birmingham – and The Partnership has contributed best practice from Cambridgeshire and Peterborough providers to inform the basis for the two pilot services. The project has also used a poster designed by the Partnership as the main awareness raising method for the pilot sites. Reciprocal learning from the

project will be valuable to both the Partnership and Adult Social Care and Adult Safeguarding services in Cambridgeshire and Peterborough.

5.9 Children's Safeguarding

Children's Social Care have seen a large increase in referrals where Domestic Abuse was a factor during the last year and their response to domestic abuse has been a priority for this year. Referrals with DA as a factor across the county have increased by 51%.

Following a mock JTAI (Joint Targeted Area Inspection) focusing on DASV in 2016/17 in Cambridgeshire, a Domestic Violence Strategy has been produced which includes a guidance handbook for staff, practice guidance on use of the DVRIM (Domestic Violence Risk Identification Matrix) and DASH. Work has also started on a consistent offer to families across the County including consideration of perpetrator programmes, group work programmes and support in the community.

Peterborough Social Care have been chosen as a pilot for the Family Safeguarding model and have restructured into 6 teams across the city, each with two DV workers. One of these workers works with victims and survivors and one works with perpetrators.

5.10 Priorities for 2018 19

- Developing the IDVA Service to meet Cambridgeshire County Council and Peterborough City Council's Single Front Door programme and ensuring links with other key services based at the MASH are robust
- Identifying funding to extend Outreach Service beyond March 2019
- Identifying funding to enable the Bobby Scheme to continue to secure the homes of domestic abuse victims
- Developing and taking forward an Adult Safeguarding/Adult Social Care action plan for DASV
- Developing a group work offer for victims/survivors across Cambridgeshire and Peterborough and supporting the Children's Social Care offer

6.0 **Pursue**

- A specialist investigation unit (DAISU) within the Constabulary responding to VAWG crime-types
- A multi-agency Domestic Violence Perpetrator Panel (DVPP) in Cambridgeshire and Peterborough, responding to high-risk and high-profile perpetrators
- The provision, within the Integrated Offender Management programme, for those who use violence and abuse
- A merged Victim and Witness Hub / Witness Care service to improve the experience of VAWG victims through a single point of contact (covered under Protect)
- A specialist domestic violence court (SDVC) to bring offenders more swiftly to justice
- A MAPPA in Cambridgeshire and Peterborough for those at the highest risk of reoffending

6.1 Police data

The Total number of domestic abuse incidents reported to the Cambridgeshire Constabulary (including Peterborough) for 2017-18 was 13237. This is a slight decrease on the 2016-18 figure. The average percentage of reported incidents where a crime had been committed in 2017-18 was 57.5% - this figure has been increasing steadily over the last five years.

Monthly domestic abuse crimes investigated by police during 2017-18 ranged from 544 to 721 crimes. The highest risk offences were dealt with by the specialist Domestic Abuse Safeguarding and Investigation Unit (DAISU).

Cambridgeshire Constabulary has recently published its 2018-2020 domestic abuse delivery plan under the following themes:

Early Intervention and Prevention – we will continue to take positive and preventative action when dealing with domestic abuse and work with partners to improve our ability to identify potential indicators of domestic abuse and controlling and coercive behaviour.

Protecting, Supporting, Safeguarding and Managing Risk – we will continue to improve our effectiveness at understanding, assessing and managing risk and protecting victims of domestic abuse and their families.

Learning and Development – we will continue to improve the way we train our officers to ensure we effectively recognise and respond to all forms of domestic abuse. We will continue to work with the Crown Prosecution Service and partners to ensure we achieve positive outcomes for victims of domestic abuse and their families.

Information, Intelligence, Data Collection and Management Information – we will continue to improve the accuracy and quality of our data and how we use the data with our partners to improve the service we provide to victims of domestic abuse and their families.

Effective Investigation and Outcomes – we will continue to improve the service we provide to victims of domestic abuse and their families, ensuring victims are fully involved and engaged in investigations. We will continue to improve the quality and timeliness of our domestic abuse investigations.

Cambridgeshire Constabulary has recently undergone a comprehensive local policing review which means that from April 2018 domestic abuse investigations will be managed by local investigation teams.

Perpetrator Panel

A multi-agency domestic abuse perpetrators panel was launched in September 2015 with the aim of getting key agencies around the perpetrator together to discuss how to improve the safety for victims. The target group for the Domestic Violence Perpetrator Panel is currently those perpetrators who have other offending issues; who may have substance misuse issues; are homeless, or have other chaotic lifestyle factors that partner services may be able to support them with. The DVPP has been effective in developing and delivering on a range of (previously unconsidered) actions to address offending behaviour / increase victim safety. It is of note, that those referred to the DVPP have been some of the highest risk cases heard at MARAC. The DVPP heard 23 cases in

2017-18 From April 2018 the DVPP will be countywide to cover Peterborough as well and a pilot of hearing SARAC Cases (sexual assault) at DVPP will start.

Offender Management

Priorities for 2018-19

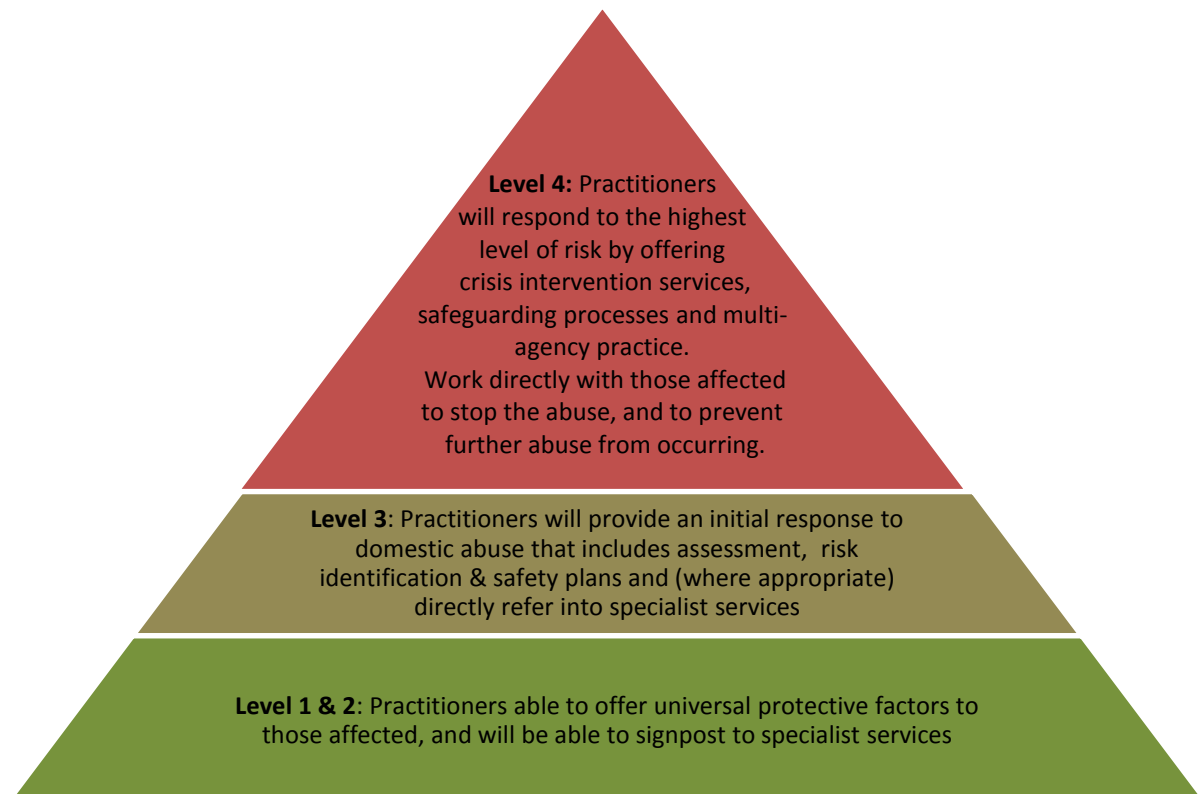
- Establish a countywide SARAC process, linked to existing MARAC process
- Embed the Domestic Violence Perpetrator Panel
- Support and review the impact of the local policing review in relation to DASV

7.0 PREPARE

- Holistic community-based provision from specialist VAWG services, such as Cambridge Women's Aid, Refuge, and the Cambridgeshire and Peterborough Rape Crisis Partnership (covered under Protect)
- Support for victims of VAWG crimes from the Cambridgeshire Victim and Witness Hub

7.3 Workforce Development

Training is offered on four levels to link in with the local offer.



During 2017-18 changes within Cambridgeshire County Council have meant that domestic abuse training provided by the workforce development team (now LGSS Learning and Development team), is no longer available free of charge to partner agencies. Due to these changes the full Domestic Abuse Training Offer is being reviewed during 2018 to ensure an offer is available across the Partnership.

7.3.1 Training data 2017-18

ELearning – The Domestic Abuse and Sexual Violence Basic Awareness eLearning modules are available for free on the DASV Partnership website. The modules are reviewed and updated regularly. The Domestic Abuse module was completed by 252 learners between April 2017 and March 2018. The Sexual Violence eLearning module was completed by 63 learners between April 2017 and March 2018.

LGSS DA Training attendance 2017-18

- Introduction to Domestic Abuse - 50 attendees
- Domestic Abuse Risk Assessment – 47 attendees
- Identifying and responding to differing typologies of Domestic Abuse – 18 attendees
- Engaging with perpetrators of Domestic Abuse – 40 attendees
- Managing Domestic Abuse in Families in the Context of Case Work – 34 attendees

Safeguarding Boards DA Training attendance 2017-18

- Children and Young People & Domestic Violence – 32 attendees
- Child Sexual abuse – 40 attendees
- Gangs (includes DA) – 75 attendees
- Introduction to Domestic Abuse – 38 attendees
- DASH Risk Assessment – 10 attendees
- Honour Based Violence – 26 attendees

Police DA Training attendance 2017-18

- DA Matters – 383 attendees
- DA Matters Champion – 81 attendees
- CPD (Continuing Professional Development) Supervisors day 30/06/17 – DA Gatekeeping/expectations input from PPD (Public Protection Department)– 47 attendees.
- Recognising Vulnerability – 242 attendees
- The Recognising Vulnerability Supervision of DA Investigations – 64 attendees

7.3.2 Other Training

General awareness training is also provided on an ad-hoc basis by the Partnership Manager, IDVA Manager and specialist services. During 2017-18 the IDVA Service delivered the following training:

- 40 Family & Health Workers

- Health professionals at Hinchingbrooke Hospital (a mix of hospital and community based professionals Inc. midwives, nurses and G.P.s)
- 150 School nurses, health visitors and nursery nurses at Doddington, Hinchingbrooke and Addenbrooke's Hospitals
- Education professionals including teachers, DV Leads from primary, secondary and colleges
- Clarion Housing (formerly Circle Roddons Housing in Fenland)
- Wisbech Health Visitors
- Cambridgeshire County Council Members
- Cambridgeshire County Council HR team
- Huntingdon Law Courts to the witness service volunteers
- Monthly training by Health IDVA at Hinchingbrooke as part of their Level 3 Safeguarding Training
- Team meetings and presentations by Health IDVA at Addenbrooke's including the Vulnerable Adults Working Group (VAWG); Safeguarding Links, monthly Domestic Violence Safeguarding Meetings; The DV Action Plan Group; Liaison Psychiatry Service away day, Discharge Planning Team inductions and Junior Doctors at their initial induction last month.
- Addenbrooke's admin staff to access MARAC information.

7.4 Priorities for 2018-19

- Developing the DASV Champions Network across the county with representatives from all partner agencies becoming Champions and attending informative quarterly network workshops.
- Achieving White Ribbon accreditation for Cambridgeshire County Council and Peterborough City Council
- Supporting Cambridgeshire and Peterborough Foundation Trust (CPFT) to implement the BARTA package from Against Violence and Abuse
- Review the workforce development offer across the county and re-establish a countywide training group.

8.0 Summary

2017-18 has seen real progress in partnership work around Domestic Abuse and Sexual Violence. The newly formed DASV Delivery Board has been able to oversee the DASV Strategy and associated action plan with support from the DASV Operational Group. There has been greater integration of IDVA Service into the wider support service to victims of crime that centres round the Victim and Witness Hub, this allows victims and witnesses to be seamlessly supported through the criminal justice process wherever they live in the county.

Successful bids to the VAWG Transformation Fund and the DCLG have enabled our support to children and young people affected by DASV, and support to victims through outreach support and the Bobby Scheme, to increase dramatically. There has also been considerable work in both adult and children's safeguarding to tackle domestic abuse.

The next year will see challenges in funding to enable many of these developments and services to continue and to enable us to meet the partnership priorities and deliver against the multi-agency action plan.

Contact Details: Julia Cullum/Vickie Crompton, Box BH1204, Babbage House, Castle Park, Cambridge, CB3
OAT Email: Dasv@cambridgeshire.gov.uk